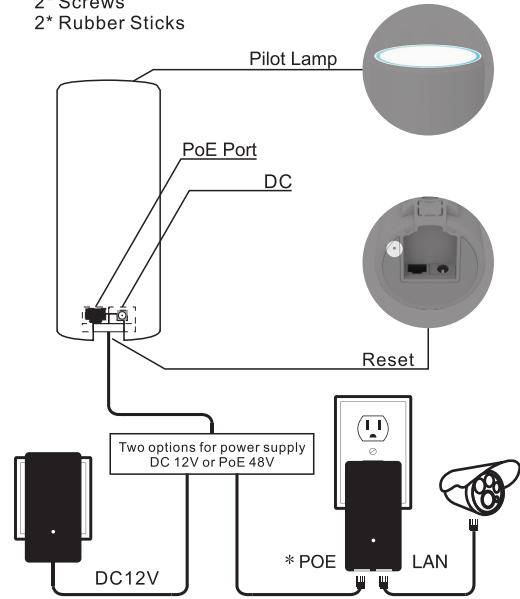


Product Manual

- 1* TD-MRT45
- 1* Quick Installation Guide
- 1* 39-inch Network Cable
- 1* Power Supply(DC12V)
- 2* Screws
- 2* Rubber Sticks



Quick Installation Guide

Wi-Fi Extender/Repeater

When connecting for the first time, the Wi-Fi extender must be placed near the router for installation. After installation, the Wi-Fi extender will retain the current configuration. This will ensure plug and play compatibility in the future.

1 Scan QR code:

1.1 To download the Tuya App:



Tuya app

1.2 For a video link to the user manual:



Bilibili



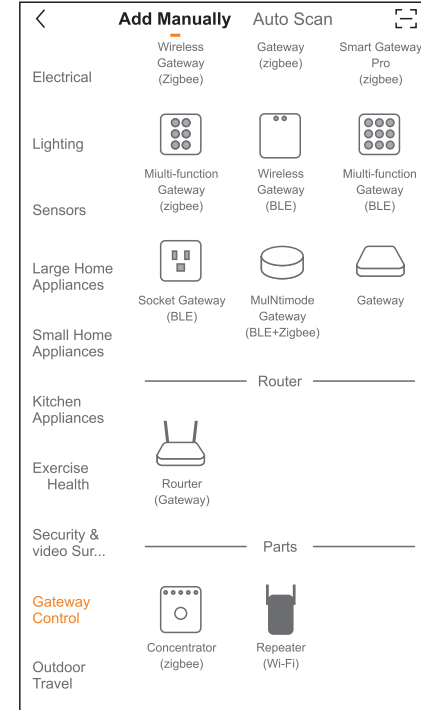
YouTube

2 Repeater Configuration

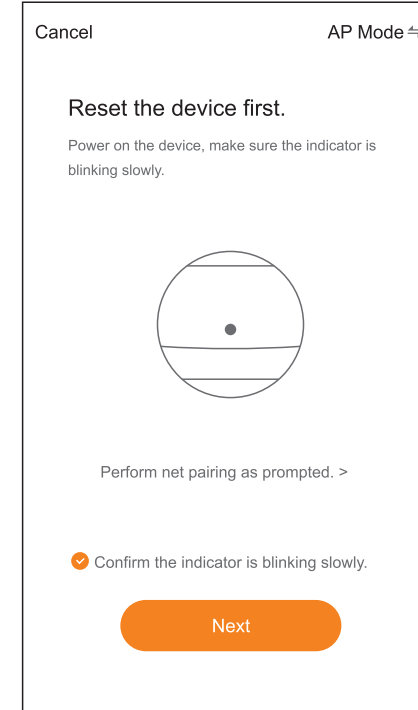
2.1 Plug in the device and ensure the lights are on.

2.2 Wait about 90 seconds for the repeater to start. Confirm the device is present on your Wi-Fi network under the name: SmartLife_762A

2.3 Open the Tuya App, click the Add button, choose Gateway Control and select Repeater.

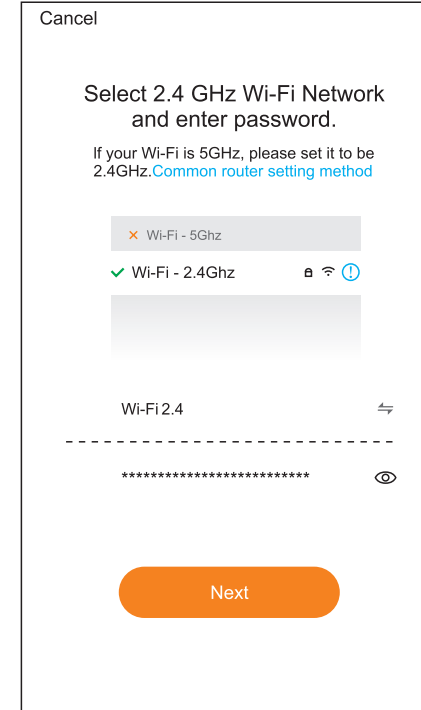


2.4 Confirm the Wi-Fi light is flashing.

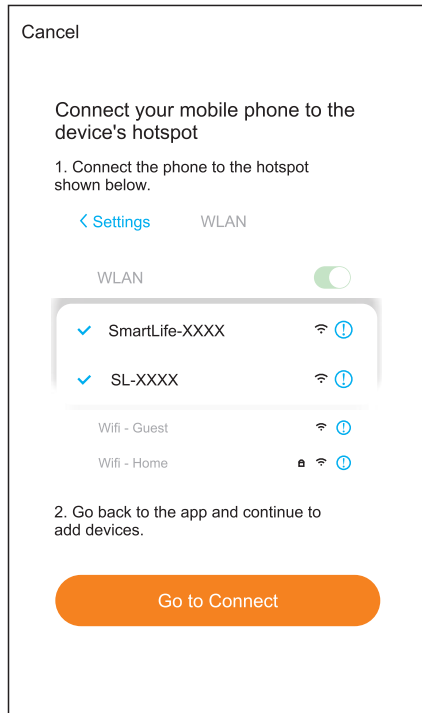


2.5 Connect to the device over Wi-Fi and enter your router's password.

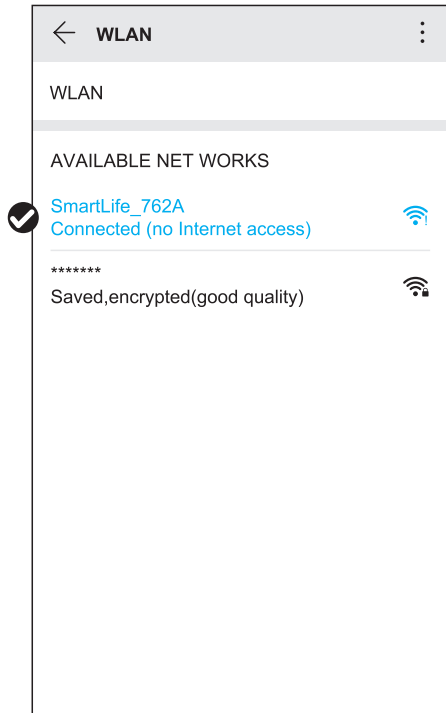
Note: The SSID should be the same for both the 2.4G and 5G signal of the main router. This way the main router and the repeater can extend both 2.4G and 5G signals.



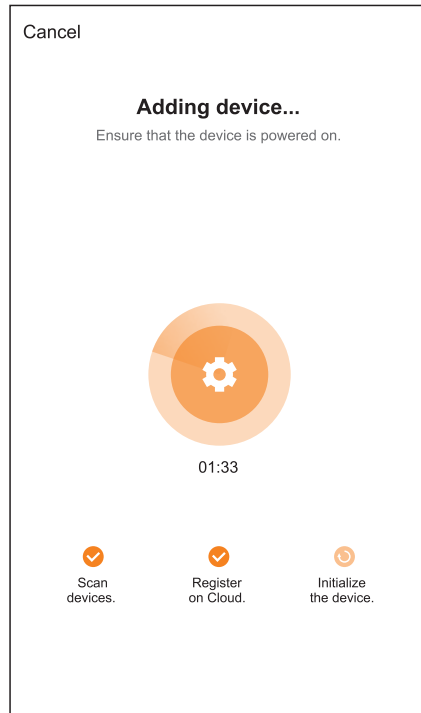
2.6 Reconnect the mobile phone to the Wi-Fi of the repeater.



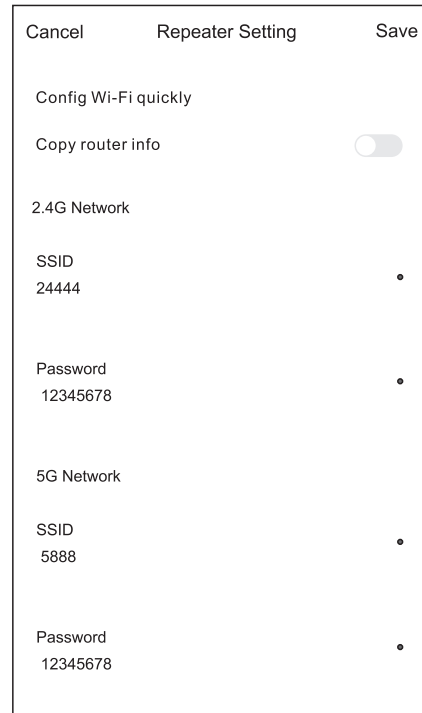
2.7 After confirming the Wi-Fi connection of the repeater is present, return to the App and continue to the next step.



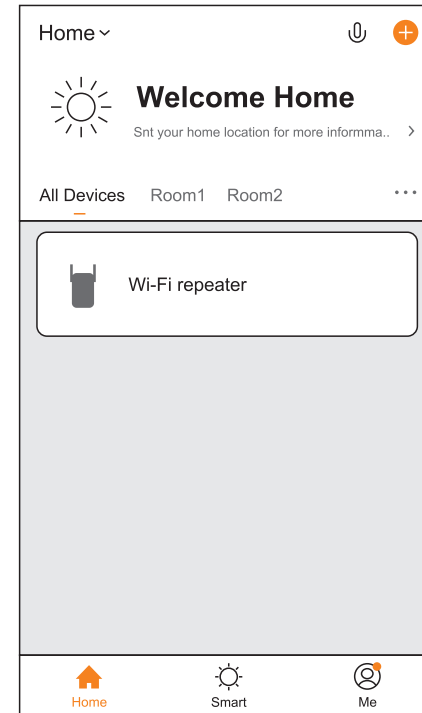
2.8 Return to the Tuya App and begin the network configuration process.



2.9 After the network configuration process is completed, input the new Wi-Fi information for the repeater, it will restart several times during configuration.



2.10 Following the configuration, the repeater will be added successfully and the network configuration is complete.



3 Q&A

Q:AP can't search and add repeater?

A: Make sure that the repeater has started normally and that the Wi-Fi lights are flashing. If not, reset the repeater and follow the configuration once again.

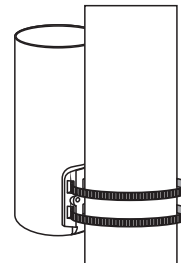
Q:How to restore factory Settings

A: After successfully starting the router, hold the RES for five seconds and confirm that the power light of the router is flashing. The router has now entered the factory state.

Q: If repeater only have 2.4G or 5G signal ?

A: The router only supports a 2.4G or 5G signal, or the SSID is not configured the same for the 2.4G and 5G signal, see step 2.5.

Pole Holding



Wall Mounting

